

Control square
3 cm x 3 cm

Front part & back part

Batting

Insert pocket

Finished hem edge

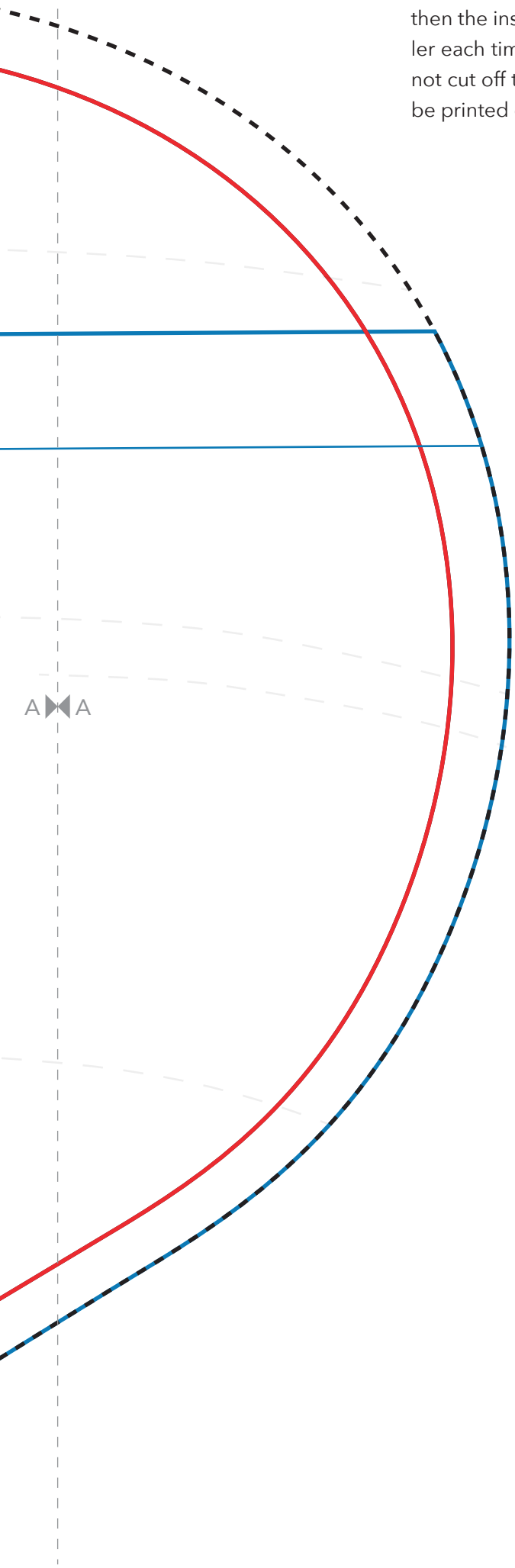
A A

Suggested stitching lines

3, 2, 1 ... Beet trend!

Note:

This cutting pattern includes all three pattern pieces of the sugar beet. When cutting, you can work from the outside in: first the front part and the back part, then the insert pocket, and finally the batting. (The cutting pattern is getting smaller each time until only the batting is left.) For the cutting of the insert pocket, do not cut off the edge but only fold it inwards. In this way the cutting pattern has to be printed only once.



Sugar beet / hanging loops

Total length: 15 cm

Total length: 18 cm

Total length: 20 cm